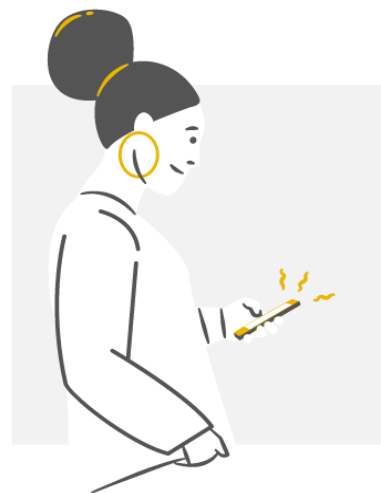




Value Based Engagement Conversation Starter Document

The Problem: Effective digital health engagement is complex, costly and time consuming.

The Solution: MEMOTEXT™ modular components enable rapid config of low-cost, secure, scalable, dynamic interactive digital health communications.



Contact: Amos Adler M.Sc.
amos@memotext.com
<https://memotext.com>

Pick One or More Communication Channels

Text Messaging

WhatsApp

Email

Web/iOS/Android Notifications

Connect External Data Sources fitbit.

Wearables

Claims

HIPAA compliant Survey

Patient Facing Site/App

Configure Message & Communication Sequencing

Data Driven

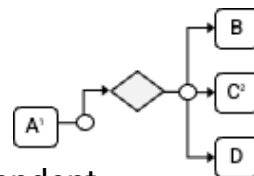
Secure surveys, wearables, claims and CRM data adjust messaging and content.

Repeating

Med & Appt reminders, patient experience assessments and questionnaires

Dynamic

Logic driven, dynamic, sequential and time dependent



NLP & ChatBot

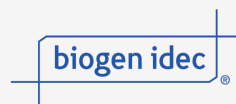
Q&A natural language conversations increase completion rates, data collection.



Design, Connect (API) or Bring Your Own Patient, Clinical and Research Portals

Landing, enrollment, education, and support pages with/without patient profiles
KPI dashboards, leaderboards and peer engagement content
Advanced analytics and Business Intelligence

Schedule a call now to deploy low-cost omnichannel treatment adherence, support, education and data-collection programs.



MEMOTEXT

Pre-Validated, Clinical Data-Driven Support,
Education, Adherence & Care-Coordination.

Automated digital patient engagement communications and digital
therapeutics.

See the results on our [digital health marketplace](#)

Contact: Amos Adler M.Sc.

amos@memotext.com

<https://memotext.com>



[Type II diabetes SMS self management](#) for at-risk
populations. co-created with Vanderbilt University
Medical Center

SmartParent

[Peri-natal & early parenting SMS evidence-based
education & support](#) with Univ. of British Columbia

BeWell

Personalized mental health assessments, [tailored
supports and engagement enhancement](#). Univ. of
Saskatchewan & CAMH Canada



[App4Independence Severe Mental Illness](#): Mobile app
& portal: Outcomes, clinical decision support and
care-coordination. A CAMH Joint Venture.

Connect External Data Sources



Wearables

Claims

HIPAA compliant surveys

API



[Join other academic, employer and clinical institutinos](#) deploying low-cost pre-
validated adherence, patient support, education and care-coordination programs.



Delivering Validated, Digital Patient
Communications Since 2012